

Protein Analysis by GFC

KW-800 and KW400 HPLC columns



KW-800 and KW400 series HPLC columns are specifically designed for protein analysis by aqueous size exclusion chromatography (GFC). They are packed with porous silica particles coated with a hydrophilic copolymer.

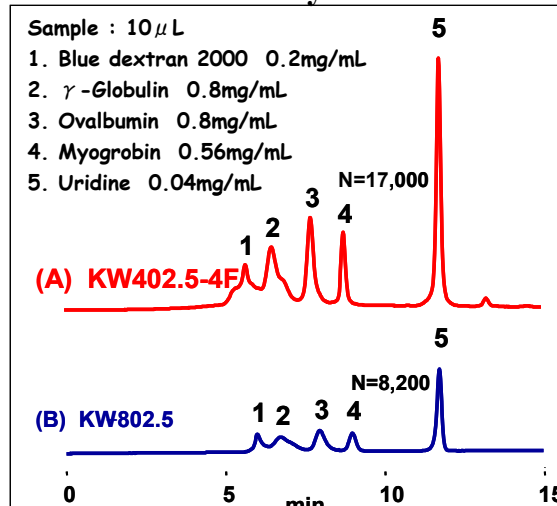
Advantages

KW-800	KW400
<ul style="list-style-type: none"> • High protein recovery rates • Highest sample load • Recommended for older HPLC systems 	<ul style="list-style-type: none"> • High protein recovery rates • 3 to 4 times greater sensitivity • 1.5 times higher TPN • Faster analyses • ~60% less eluent consumption

High Recovery Rates

Protein	Recovery (%)	
	KW-802.5	KW402.5-4F
γ - Globulin	91	98
Bovine serum albumin	94	89
Ovalbumin	89	89
Myoglobin	92	90
Cytochrome c	100	92
Lysozyme	98	87
α - Chymotrypsinogen A	93	95

Enhanced Sensitivity of KW400



Columns : (A) Shodex KW402.5-4F
(4.6 I.D. x 300 mm)
(B) Shodex KW-802.5
(8.0 I.D. x 300 mm)

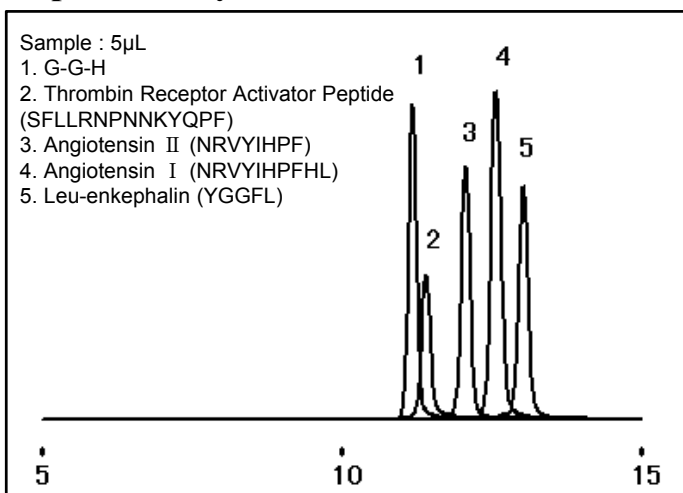
Eluent : 50mM Sodium phosphate buffer (pH 7.0)
+ 0.3 M NaCl

Flow rate : (A); 0.33 mL/min, (B); 1.0 mL/min

Detector : UV (280 nm)

Column temp. : Room temp.(25°C)

Peptide Analysis



Column : Shodex KW402.5-4F

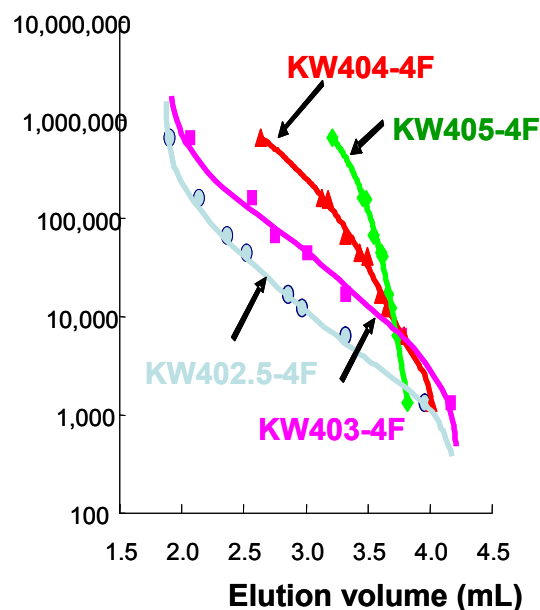
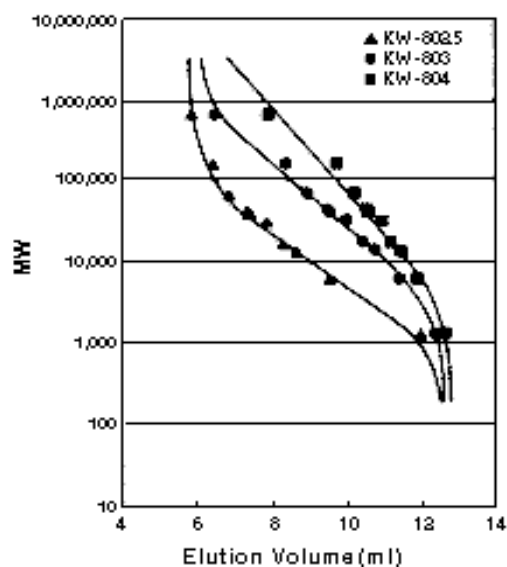
Eluent : 50 mM Sodium Phosphate buffer (pH 7.0)
+ 0.3 M NaCl

Flow rate : 0.33 mL/min

Detector : UV (220nm)

Column temp. : 30°C

Calibration Curves



Columns : (A) Shodex **KW-800 series** (8.0 I.D. x 300 mm),
 (B) Shodex **KW400-4F series** (4.6 I.D. x 300 mm)
 Eluent : 50 mM Sodium phosphate buffer (pH 7.0) + 0.3 M NaCl
 Flow rate : (A) 1.0 mL/min, (B): 0.33 mL/min
 Detector : (A) UV (220 nm), (B): UV (280 nm)
 Column temp. : Room temp. (25°C)

Column Specifications

Column series	Column Name	Size (mm) I.D. × L	Plate Number (TP/column)	Exclusion Limit		Particle Size (µm)	Pore Size (Å)	
				Pullulan	Protein		Max.	Avg.
KW-800	KW-802.5	8.0 × 300	> 21,000	60,000	150,000	5	400	150
	KW-803	8.0 × 300	> 21,000	170,000	700,000	5	1,000	300
	KW-804	8.0 × 300	> 16,000	500,000	1,000,000	7	1,500	500
	KW-G	6.0 × 50	(Guard)	—	—	7	—	—
KW400	KW402.5-4F	4.6 × 300	> 35,000	60,000	150,000	3	400	150
	KW403-4F	4.6 × 300	> 35,000	150,000	600,000	3	800	250
	KW404-4F	4.6 × 300	> 25,000	500,000	1,000,000	5	1,500	500
	KW405-4F	4.6 × 300	>25,000	1,300,000	20,000,000	5	2,000	1,000
	KW400G-4A	4.6 × 10	(Guard)	—	—	5	—	—

For price quotes and technical information, please contact:



Hichrom Limited

1 The Markham Centre, Station Road
 Theale, Reading, Berkshire, RG7 4PE, UK
 Tel: +44 (0)118 930 3660 Fax: +44 (0)118 932 3484
 Email: sales@hichrom.co.uk or technical@hichrom.co.uk