

Packed column for analyses of inorganic gases

SHINCARBON ST

Fits all GC models

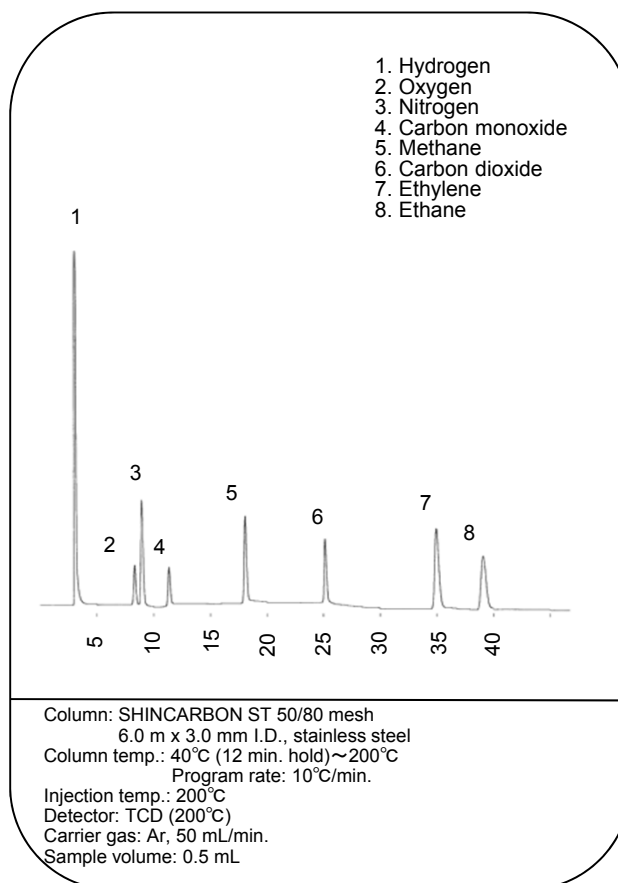
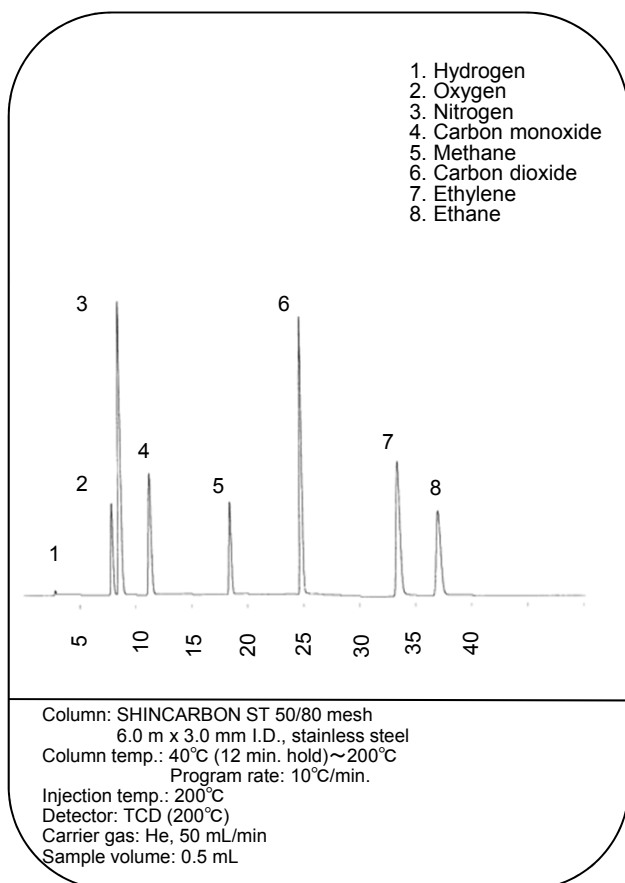


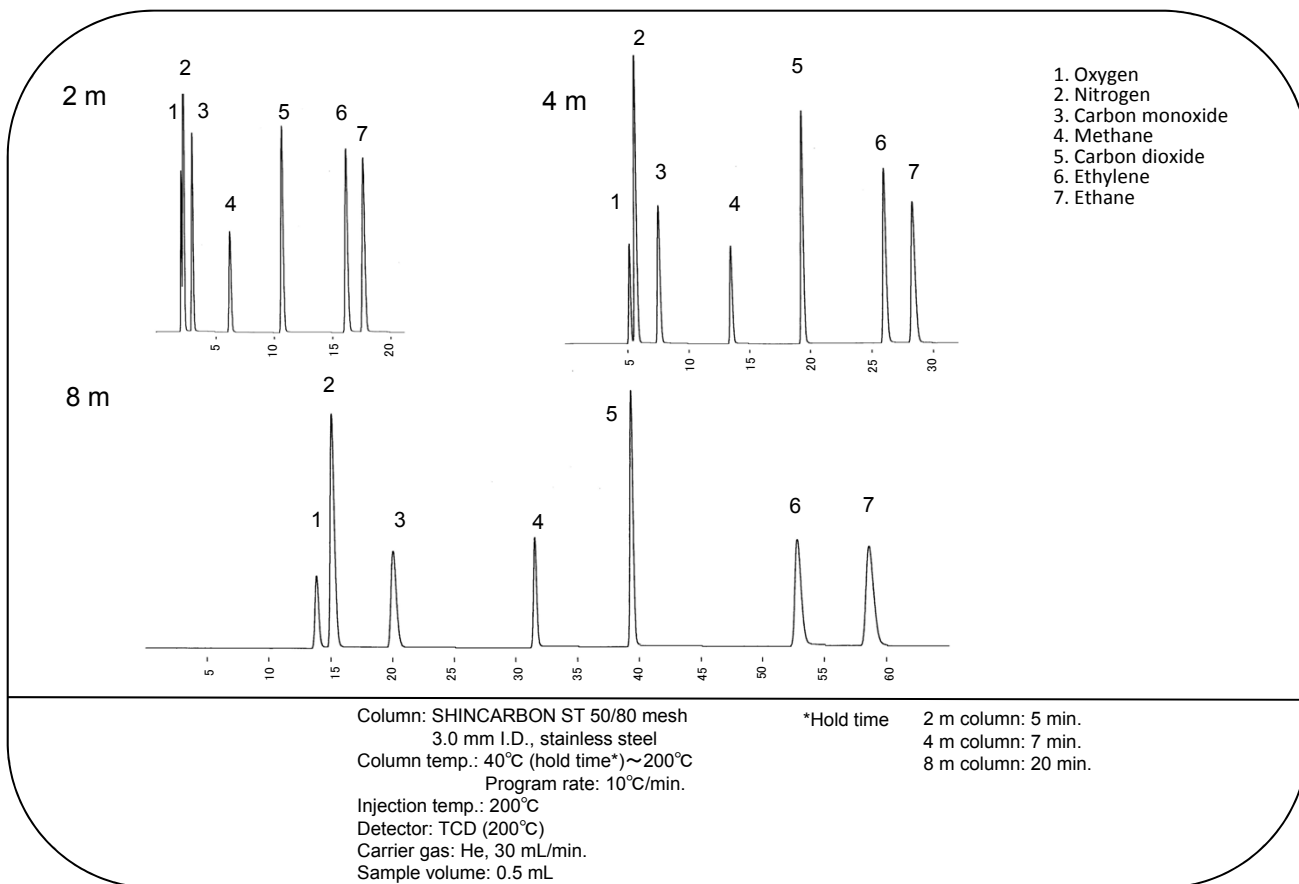
SHINCARBON ST is a revolutionary packing material designed for analyses of inorganic gases that consists of a specially treated carbon, and boasts the advantages of both molecular sieves and Porapak Q.

Features

- Simultaneous analyses of H₂, O₂, CO, CH₄, CO₂, N₂O, C₂H₂, C₂H₄, and C₂H₆ are possible using one column.
- When analyzing samples containing water, water does not appear as a peak, but the injection of water does not lead to the deterioration of columns. Water can be driven from columns by increasing the temperature of columns.
- Column lengths of 2, 4, 6, and 8 meters are available to meet particular analytical purposes (4 m: 2×2 meter column, 6 m: 3×2 meter column, 8 m: 4×2 meter column).

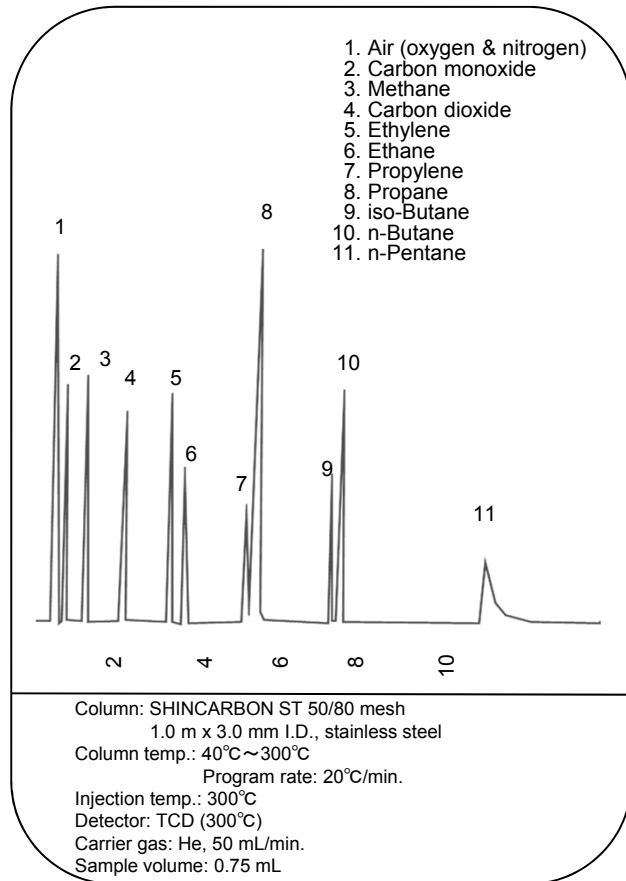
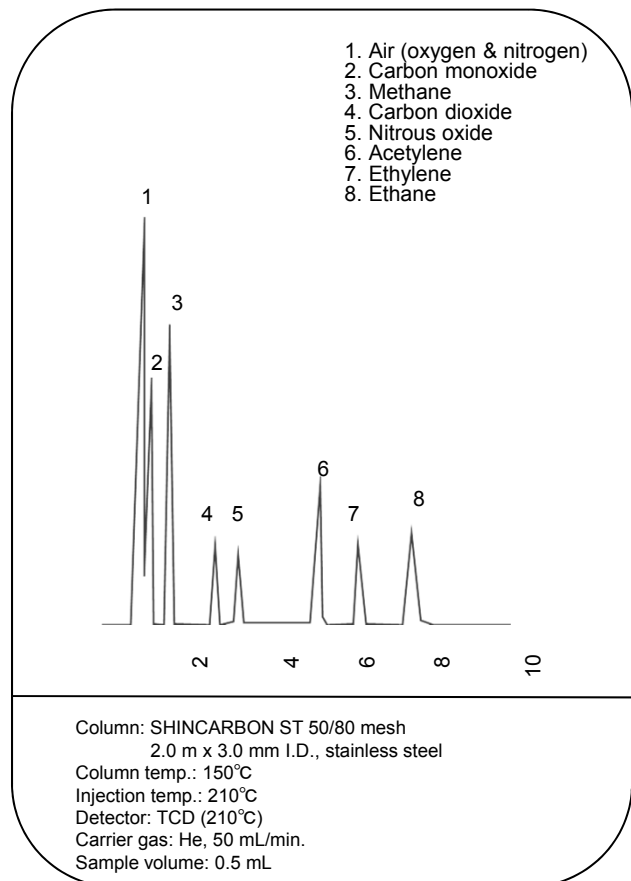
Inorganic gases and short chain hydrocarbons (1)





Short chain hydrocarbons (acetylene & ethylene)

Inorganic gases and short chain hydrocarbons (3)



Product information**For Shimadzu GC models**

Part number	Column name	Column material	Column dimensions
ZT-15 SZ	SHINCARBON ST 50/80	Stainless steel	1.0 m x 3.0 mm
ZT-11 SZ	SHINCARBON ST 50/80	Stainless steel	2.0 m x 3.0 mm
ZT-12 SZ	SHINCARBON ST 50/80	Stainless steel	4.0 m (2.0 m x 2) x 3.0 mm
ZT-13 SZ	SHINCARBON ST 50/80	Stainless steel	6.0 m (2.0 m x 3) x 3.0 mm
ZT-14 SZ	SHINCARBON ST 50/80	Stainless steel	8.0 m (2.0 m x 4) x 3.0 mm
ZT-10 SZ	Shimalite Q 100/180 (Reference column)	Stainless steel	0.5 m x 3.0 mm

For Agilent GC models

Part number	Column name	Column material	Column dimensions
ZT-15 AT	SHINCARBON ST 50/80	Stainless steel	1.0 m x 3.0 mm
ZT-11 AT	SHINCARBON ST 50/80	Stainless steel	2.0 m x 3.0 mm
ZT-12 AT	SHINCARBON ST 50/80	Stainless steel	4.0 m (2.0 m x 2) x 3.0 mm
ZT-13 AT	SHINCARBON ST 50/80	Stainless steel	6.0 m (2.0 m x 3) x 3.0 mm
ZT-14 AT	SHINCARBON ST 50/80	Stainless steel	8.0 m (2.0 m x 4) x 3.0 mm
ZT-10 AT	Shimalite Q 100/180 (Reference column)	Stainless steel	0.5 m x 3.0 mm

Please contact us for details regarding other GC models.

Please be aware that specifications and prices are subject to change without prior notification due to the implementation of improvements.



50-2 Kagekatsu-cho, Fushimi-ku
Kyoto 612-8307 JAPAN
TEL: +81-75-621-2360 FAX: +81-75-602-2660
URL: <http://shinwa-cpc.co.jp/>
E-mail: info@shinwa-cpc.co.jp