

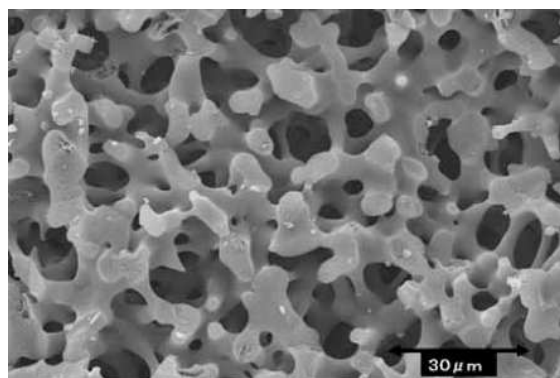
Monolithic Silica Tips (MonoTip™ Trypsin) for Digestion of Proteins

MonoTip™ Trypsin pipette tips are designed for the digestion of proteins in proteomic analyses. Monolithic silica consists of a double pore structure having continuous through-pores and silica skeletons which have meso-pores. The silica skeletons make a network structure (see below). This unique monolithic silica structure contributes to low pressure-drop and strong analyte-to-surface interactions.

MonoTip Trypsin (TPCK treated bovine pancreas immobilized on monolithic silica) catalyses the quick digestion of reduced and alkylated proteins at room temperature with just a few simple operations.

Features

- Faster sample preparation by enzyme action from aspirating/expelling 10x, at room temperature
- Low sample loss
- No contamination from self digestion of trypsin and monolithic silica
- Large sample capacity (~100µg protein)

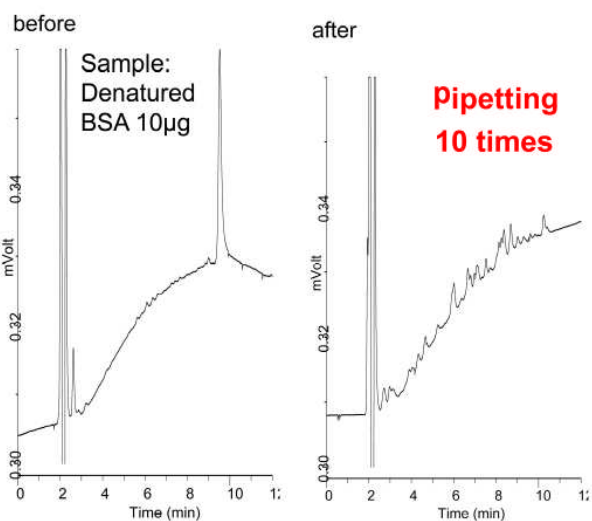


Specifications of MonoTip™ Trypsin

Silica type	: High purity sol-gel silica gel
Specific surface area	: 100m ² /g
Through pore size	: 10~20µm
Meso pore size	: 30nm
Bonded phase	: TPCK treated trypsin (bovine)
Tip volume	: 200µL
Sample capacity	: 100µg (denatured BSA) : 2.5 BAEE unit/tip
Enzyme buffer	: 50mM ammonium bicarbonate (pH8.0)



Digestion by Monotip Trypsin

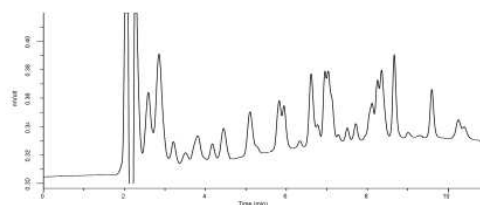


Conditions

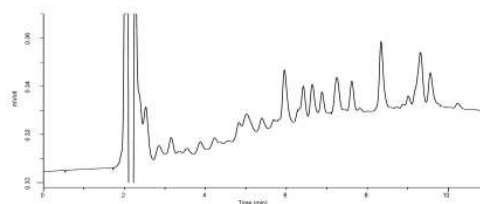
Column: Inertsil WP300 C8
(5 µm, 150 x 4.6 mm I.D.)
Eluent: A) 0.1% TFA in H₂O
B) 0.1% TFA in CH₃CN
A/B=90/10-(10min)-40/60
Flow rate : 1mL/min
Col.Temp.: 35°C
Detection : UV 210nm

Large sample capacity

1mg/ml Denatured BSA 100µg (after digestion)



1mg/ml Denatured Transferrin 100µg (after digestion)



Conditions

Column: Inertsil WP300 C8
(5 µm, 150 x 4.6 mm I.D.)
Eluent: A) 0.1% TFA in H₂O
B) 0.1% TFA in CH₃CN
A/B=90/10-(10min)-40/60
Flow rate : 1mL/min
Col.Temp.: 35°C
Detection : UV 210nm

Ordering Information

Description	Catalogue No.
MonoTip Trypsin 96/Box	5010-21010
MonoTip Trypsin 24/Box	5010-21012
MonoTip Trypsin 8/Box	5010-21011

“Based on monolithic technology, Merck KGaA, Darmstadt, Germany”

Hichrom Limited
1 The Markham Centre, Station Road, Theale, Reading, RG7 4PE UK
TEL: +44 (0) 118 930 3660 FAX: +44 (0) 118 932 3484
EMAIL:technical@hichrom.co.uk

