



HICHROM

Chromatography Columns and Supplies

LC COLUMNS
Eprogen

Catalogue 9

Hichrom Limited

1 The Markham Centre, Station Road
Theale, Reading, Berks, RG7 4PE, UK

Tel: +44 (0)118 930 3660 Fax: +44 (0)118 932 3484

Email: sales@hichrom.co.uk www.hichrom.co.uk

EPROGEN

- Reversed-phase and ion-exchange silica phases
- SynChropak bonding chemistry
- Well suited for preparative formats

Eprogen Inc. manufactures a range of phases for reversed-phase, ion-exchange and size exclusion chromatography. The products listed below are based on the well-established SynChropak® bonding chemistry. The range is well suited to scaling up to preparative formats.

Eprogen Phases

Phase	Functional Group	Particle Size (µm)	Pore Size (Å)	Applications
Reversed-phase				
RP8	C8 (monomeric)	5	300	Peptides, proteins
SCD	Short alkyl chain	5	100	Pharmaceuticals
Ion-exchange				
AX300	Polyethyleneimine	6	300	Peptides, proteins
Q300	Quaternary amine	6	300	Proteins
CM300	Carboxymethyl	6	300	Proteins, haemoglobin
S300	Sulphonic acid	6	300	Basic peptides, proteins

Column: Eprogen Q300 (250 x 4.6mm)
 Eluent: A: 0.02M Tris, pH 7.0
 B: 0.02M Tris, 0.5M Na acetate
 0 to 100% B in 30 mins
 Flow rate: 1ml/min
 Detection: post column reaction

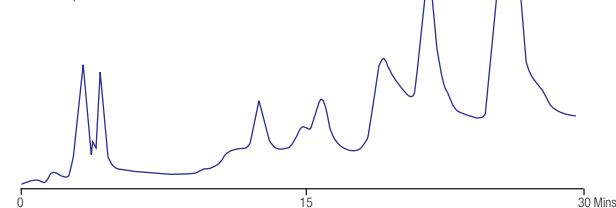


Figure 1. Analysis of lactate dehydrogenase isoenzymes

Column: Eprogen CM300 (250 x 4.6mm)
 Eluent: A: 0.02M Tris-acetate, 1mM EDTA, 1.0mM DTT,
 0.02% NaN₃, pH 6.0
 B: A + 0.5M Na acetate, pH 6.0
 10% B for 10mins, then 10-40% B in 15mins
 Flow rate: 1ml/min

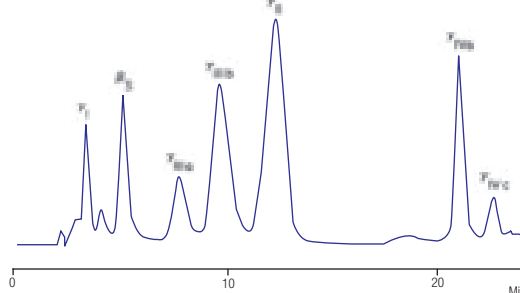


Figure 2. Analysis of calf lens crystallins

Ordering Information – Hichrom Manufactured Columns

Eprogen Phase	Column Dimensions ¹ (mm)		Guard Cartridges ² (For 4.6mm i.d. Columns)
	150 x 4.6	250 x 4.6	
RP8	C8R103-150A	C8R103-250A	(5/pk) ³ C8R103-10C5
SCD	SCD100-150A	SCD100-250A	SCD100-10C5
AX300	A103-150A	A103-250A	(5/pk) ³ A103-10C5
Q300	Q103-150A	Q103-250A	Q103-10C5
CM300	CM103-150A	CM103-250A	CM103-10C5
S300	S103-150A	S103-250A	S103-10C5

¹ Other column dimensions available – please enquire

² Use with free-standing holder HI-161 and column coupler HI-081 – see p. 24

³ Starter kits also available – see p. 25

In addition to the Hichrom manufactured columns listed above, Eprogen packed columns can be provided, including:

- Non-porous silica (1.5µm) phases based on MICRA® NPS® technology
- Eprogen IEX columns – strong and weak anionic and cationic ion exchangers on polymer coated silica supports (AX300, Q300, CM300, S300 and S1000)
- Eprogen GPC and CATSEC columns – size exclusion technology for polymer and biomolecule separations (based on original SynChropak® bonding technology)

Please contact Hichrom for further details of Eprogen packed columns.