

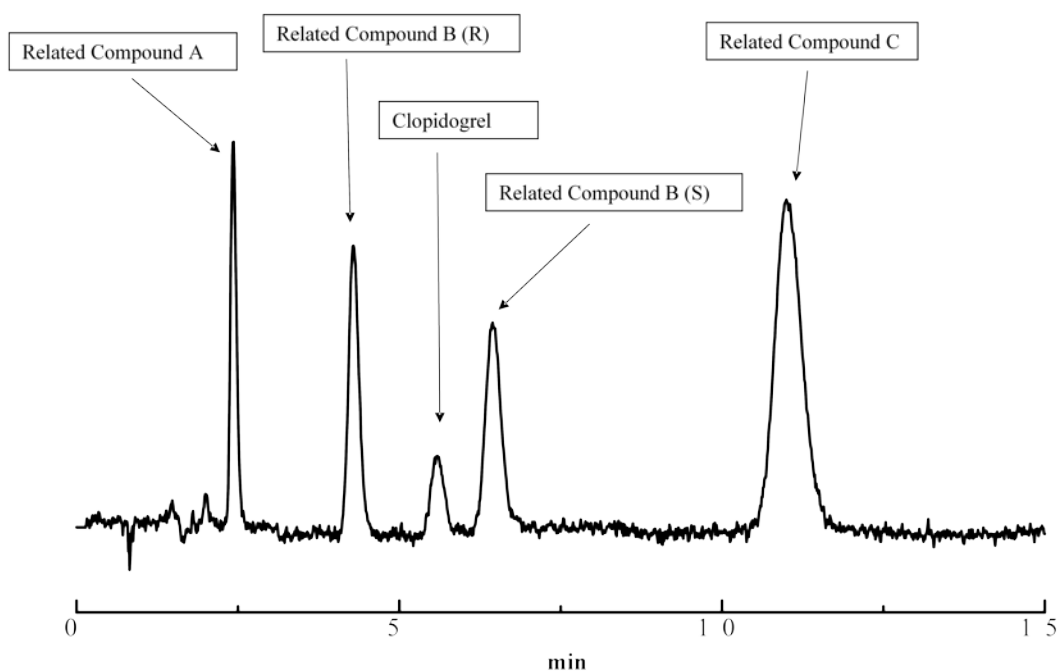
Separation of Clopidogrel Bisulfate and Related Substances on Ultron ES-OVM (L57)

(columns available from Hichrom Ltd)

Clopidogrel Bisulfate

| | |
|------------------|---|
| Column | ULTRON ES- OVM 150 x 4.6 mm I.D. |
| Sample | Clopidogrel Bisulfate <i>RS</i> : 0.5µ g/ mL |
| | Related Compound A <i>RS</i> : 1µ g/ mL |
| | Related Compound B <i>RS</i> : 3µ g/ mL |
| | Related Compound C <i>RS</i> : 5µ g/ mL |
| Mobile Phase | 10mM KH ₂ PO ₄ / Acetonitrile = 75 / 25 |
| Flow Rate | 1.0 mL / min |
| Injection Volume | 10µ L |
| Temperature | 25 degrees celsius |
| Detection | 220nm |

 SHINWA CHEMICAL INDUSTRIES, LTD.



Column Details

| | |
|-------------|--------------------------------|
| Description | Ultron ES-OVM 5µm, 150 x 4.6mm |
| Part Number | ESOVM-1546 |

