



HICHROM

Chromatography Columns and Supplies

SAMPLE PREPARATION Solid Supported Liquid- Liquid Extraction

Catalogue 9

Hichrom Limited

1 The Markham Centre, Station Road
Theale, Reading, Berks, RG7 4PE, UK

Tel: +44 (0)118 930 3660 Fax: +44 (0)118 932 3484

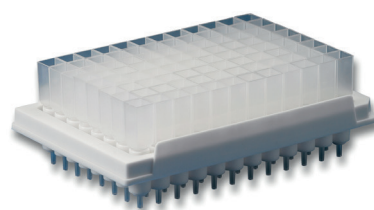
Email: sales@hichrom.co.uk www.hichrom.co.uk

HyperSep™ SLE

- Simple easy to use protocol
- Removal of phospholipids
- Greater reproducibility and recoveries compared to LLE
- Easily automated
- Prevents emulsification

Solid supported liquid-liquid extraction (SLE) is a fast, effective sample separation technique that offers considerable benefits over traditional liquid-liquid extraction (LLE) protocols for dealing with biological matrices. HyperSep™ SLE from Thermo Scientific enables greater reproducibility and reliability in sample preparation compared to liquid-liquid extraction. In addition, unlike protein precipitation techniques, it also removes contaminants such as phospholipids. HyperSep SLE plates and columns also provide a platform for greater automation than with traditional LLE. Their use reduces solvent requirements and can prevent complications such as emulsification of the separate phases. SLE is particularly suited to the extraction of components of moderate to low polarity ($\log P > 2$).

HyperSep SLE columns and plates are available in a range of sizes, including 96 well format, to suit sample size and throughput requirements. The solid support consists of specially treated diatomaceous earth and is available in acidified or basified formats to help simplify the protocol when acidic or basic eluents are used. The aqueous sample is first loaded on to the support and allowed to adsorb. Small volumes of extraction solvent are then passed through the packing to allow the analytes to partition into the solvent. This can be carried out several times and the individual extraction volumes combined and dried down, before being reconstituted and analysed.

**Ordering Information****HyperSep Columns**

| Phase | Sorbent Mass/Volume Capacity | | | | |
|-------------------|------------------------------|--------------------------|--------------------------|---------------------------|----------------------------|
| | 200mg/3ml | 500mg/3ml | 500mg/6ml | 1g/6ml | 2g/12ml |
| Pack Size | 50 | 50 | 30 | 30 | 20 |
| HyperSep SLE pH 7 | 60109-200-3-7 £70 | 60109-500-3-7 £60 | 60109-500-6-7 £63 | 60109-1000-6-7 £48 | 60109-2000-12-7 £54 |
| HyperSep SLE pH 9 | 60109-200-3-9 £70 | 60109-500-3-9 £60 | 60109-500-6-9 £63 | 60109-1000-6-9 £48 | 60109-2000-12-9 £54 |

HyperSep 96 Well Plates¹

| Phase | Sorbent Mass/Volume Capacity | | | |
|-------------------|------------------------------|---------------------------|---------------------------|---------------------------|
| | 200mg/2ml | 300mg/2ml | 400mg/2ml | 500mg/2ml |
| HyperSep SLE pH 7 | 60109-200-2-7W £80 | 60109-300-2-7W £80 | 60109-400-2-7W £85 | 60109-500-2-7W £85 |
| HyperSep SLE pH 9 | 60109-200-2-9W £80 | 60109-300-2-9W £80 | 60109-400-2-9W £85 | 60109-500-2-9W £85 |

¹ Prices shown are for one 96 well plate