



HICHROM

Chromatography Columns and Supplies

LC CONSUMABLES AND ACCESSORIES Hichrom Column Selectors

Catalogue 9

Hichrom Limited

1 The Markham Centre, Station Road
Theale, Reading, Berks, RG7 4PE, UK

Tel: +44 (0)118 930 3660 Fax: +44 (0)118 932 3484

Email: sales@hichrom.co.uk www.hichrom.co.uk

HICHROM COLUMN SELECTORS

- Save time with unattended column switching operation
- Optimise method development by multiple column screening
- Eliminate sample carryover
- Easier method validation by comparison of multiple columns from single packing lot
- Available in stainless steel and PEEK

Hichrom's HiPRO series of column selectors and fluid processors consists of precision, electronically controlled motorised valve instruments for repetitive fluid switching operations. They allow users to save time and money, and increase productivity and reproducibility. They can be easily and rapidly added to any instrument.

Hichrom's HiPRO column selectors are self-contained, electrically operated instruments for automated column selection. Models for up to 3 or 6 columns are available. All models accommodate precolumns, analytical and preparative scale columns in lengths of 5-35cm and 3-25mm o.d. The column selectors are available in either stainless steel or biocompatible PEEK. They can be used with a wide range of solvents, buffers and eluents. Unused columns can be stored in the preferred storage solvent.

The unique valve flow design eliminates potential carryover problems during switching applications. It also eliminates unswept volume within the valve and minimises dispersion. Safe and convenient solvent containment is provided by the built-in drip tray. The magnetically secured cover ensures ambient temperature stabilisation and environmental isolation.

Column selector applications include chiral recognition, SPE sample preparation, desalting and buffer exchange. Column quality control, system-to-system ruggedness and other validation studies can also be easily performed.

These column selectors are compatible with most HPLC systems. All units are supplied with 10-32 threaded PEEK nuts and ferrules for all ports, 3.5m of 1/16" o.d. stainless steel or PEEK tubing, universal power supply, power line cord and interface cable.



Figure 1. HiPRO 6-Column Selector

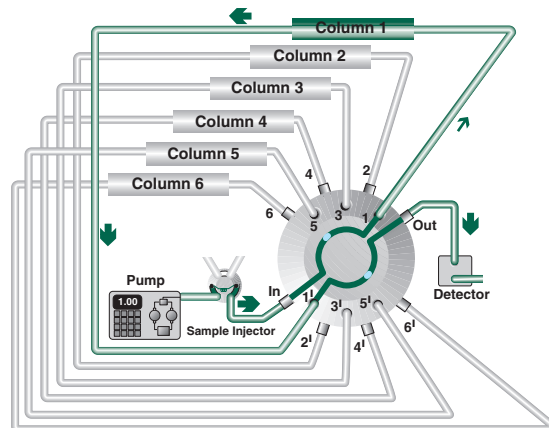


Figure 2. Flow path of 6-column selector

Ordering Information

Description	Stator Material	Catalogue Number	Price
6-Column Selector	Stainless steel	HV-500-104	
6-Column Selector	PEEK	HV-550-104	
3-Column Selector	Stainless steel	HV-500-100	
3-Column Selector	PEEK	HV-550-100	